

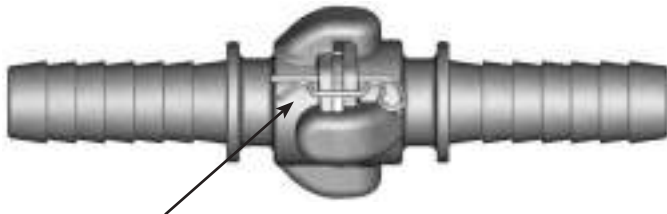
SERVICE - Dixon Air King couplings are recommended for use on air lines for virtually any type of pneumatic equipment. **The maximum recommended working pressure for Dixon Air King universal couplings is 150 PSI or less at ambient temperature (70° F).**

FEATURES - Dixon Air King fittings have a universal head which is identical for all parts (hose ends, male NPT and female NPT) within the 1/4" to 1" range. This enables any two fittings (within that range) to be directly connected regardless of hose shank or threaded size. Dixon Air King couplings with interlocking ferrule also have the standard Air King universal head. This enables any of the Air King with ferrule couplings to connect directly to any other Air King coupling within the 1/4" - 1" range. The ferrule comes attached to the fitting for easy installation. The ferrules can be swaged or crimped depending on your coupling installation equipment. Swaging and crimping dimensions are provided on page 9 of this brochure.

CONNECTION - Connections are made by pushing two heads together and turning one quarter turn in a clockwise direction. When this is done and the heads have seated properly, the small holes through the flange on the side of each coupling head will line up. An Air King Safety Clip should be inserted at this point to assure the Air King couplings will not become accidentally disconnected. If a Safety Clip is not available, insert a cotter pin or wire type retainer through the holes. The fitting is now ready to be put into service.

DISCONNECTION - Remove the safety clip, cotter pin or wire. Press the heads firmly together and turn them counterclockwise. The heads will then separate. **NEVER attempt to disconnect any hose while pressure is in the line.**

INTERCHANGE - Although Air King couplings may interchange with other manufacturers' fittings, **we do not recommend their use with other products.** Not all locking heads are made to the same standards as Dixon Air King. Use with other brands of fittings may create an unsafe condition, due to poor design or worn equipment.



The use of an Air King Safety Clip, cotter pin, or wire type retainer is necessary to assure "Air King" Universal Couplings will not become accidentally disconnected. This guarantees the fittings are properly connected as a safety clip or pin will not go through the holes in the mating flanges until the couplings are locked in place. Only one Air King Safety Clip or wire type retainer is required for each Air King Universal Coupling Assembly.

Synthetic cord Lanyards (not pictured) are available separately for fastening the Safety Clip to the locking head (see page 10).

**Air King meets pressure requirements as specified
in A-A-59553 commercial item description superseding Mil Spec. WWC-633D.**

The Importance of Whip Hose

The constant vibration created by air tools, like air drills and pavement breakers, is destructive to air hose couplings, especially the quick-acting type. To provide a safer working environment, connect one end of a 3' to 10' length of air hose to the tool using Dixon's No. 3500 Steel Nipple. This nipple is designed to specifically handle vibration applications. Connect the other end of hose to the air supply using the standard quick-acting coupling. The Whip Hose should remain permanently connected to the tool.

SAFETY

Dixon's couplings and retention devices are designed to work safely for their intended use. The selection of the proper hose, coupling, and retention devices; and the proper application of the coupling to the hose are of utmost importance.

Users must consider the size, temperature, application, media, pressure, and hose and coupling manufacturer's recommendations when selecting the proper hose assembly components. Dixon recommends that all hose assemblies be tested in accordance with the Association of Rubber Product Manufacturers' recommendations and be inspected regularly (before each use), to ensure that they are not damaged or have become loose.

Where safety devices are integral to the coupling, they must be working and utilized. The use of supplementary safety devices, such as safety clips and King Cable safety cables, are recommended. If any problem is detected, couplings must be removed from service immediately.

Dixon is always available for consultation concerning the couplings and accessories we sell. We will suggest the appropriate fittings, test those applications when necessary, and train distributors in assembly procedures. We strongly recommend that distributors and end users make use of these services.

Dixon can be contacted at 877-963-4966.



Male NPT Ends

- Male NPT thread with hex for a wrench
- Available in iron, brass or 316 stainless steel (1/4" not available in stainless steel)
- Available in sizes 1/4" to 1"

Size	Iron		Brass		316 Stainless Steel
	Part #	pkg qty	Part #	pkg qty	Part #
1/4"	AMB1	25	ABB1	25	----
3/8"	AMB	25	ABB	25	RAMB
1/2"	AM2	50	AB2 ¹	50	RAM2
3/4"	AM7	50	AB7 ¹	50	RAM7
1"	AM12	50	AB12 ¹	50	RAM12

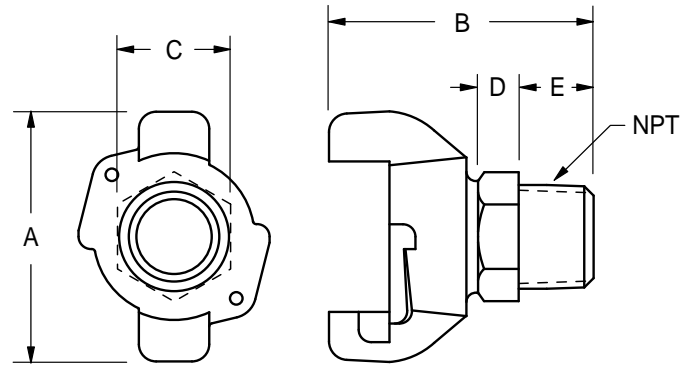
Dimensions

Size	A	B	C	D	E	NPT
1/4"	2-1/2"	2-9/16"	1"	7/16"	5/8"	1/4"
3/8"	2-1/2"	2-9/16"	1"	7/16"	5/8"	3/8"
1/2"	2-1/2"	2-11/16"	1-1/8"	1/2"	13/16"	1/2"
3/4"	2-1/2"	2-13/16"	1-3/8"	9/16"	7/8"	3/4"
1"	2-1/2"	2-7/8"	1-1/2"	5/8"	7/8"	1"

¹ Global Investment Cast



brass shown



All dimensions are nominal.

Female NPT Ends

- Female NPT thread with hex for a wrench
- Available in iron, brass or 316 stainless steel (1/4" not available in stainless steel)
- Available in sizes 1/4" to 1"

Size	Iron		Brass		316 Stainless Steel
	Part #	pkg qty	Part #	pkg qty	Part #
1/4"	AMC1	25	ABC1	25	----
3/8"	AMC	25	ABC	25	RAMC
1/2"	AM3	50	AB3 ¹	50	RAM3
3/4"	AM8	50	AB8 ¹	50	RAM8
1"	AM13	50	AB13 ¹	50	RAM13

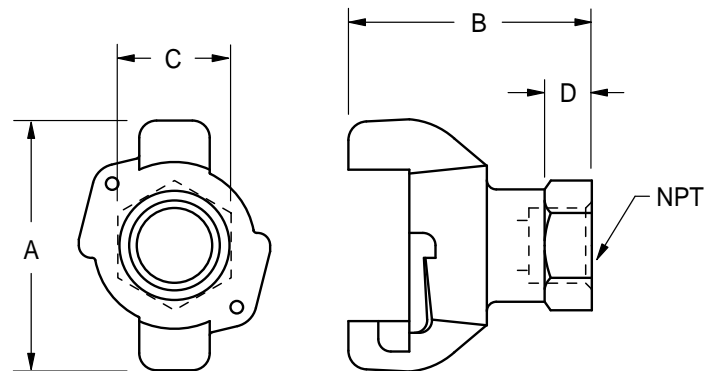
Dimensions

Size	A	B	C	D	NPT
3/8"	2-1/2"	2-7/16"	1-1/8"	3/8"	1/4"
1/2"	2-1/2"	2-7/16"	1-1/8"	3/8"	3/8"
5/8"	2-1/2"	2-7/16"	1-1/8"	3/8"	1/2"
3/4"	2-1/2"	2-1/2"	1-7/16"	3/8"	3/4"
1"	2-1/2"	2-1/16"	1-5/8"	3/8"	1"

¹ Global Investment Cast



brass shown

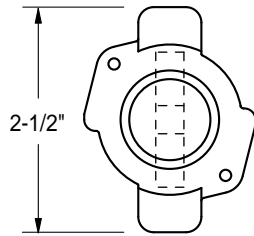


All dimensions are nominal.

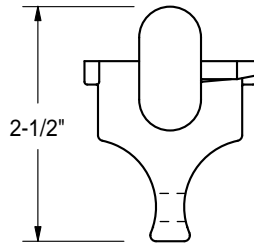
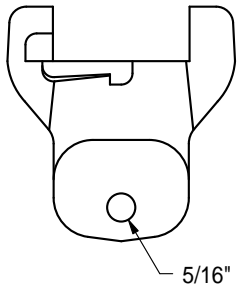
Blank Ends



brass shown



- Blank end fittings have no outlet and are used to block the line at any coupling point.
- The end opposite the coupling head is flat, with an eye for a chain to secure the fitting when not in use.
- Available in iron, brass and 316 stainless steel

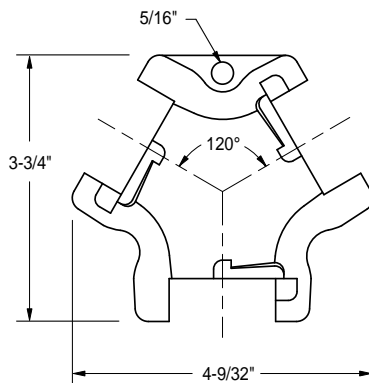


Iron		Brass		316 Stainless Steel
Part #	opt. qty	Part #	pkg qty	Part #
AM0	25	AB0 ¹	25	RAM0

¹ Global Investment Cast

All dimensions are nominal.

Triple Connections



- Triple connection consists of three universal coupling heads in a Y form that provides an extra outlet when connected to the line.
- Available in iron or brass

Malleable Iron		Brass	
Part #	opt. qty	Part #	pkg qty
AM10	25	AB10 ¹	25

¹ Global Investment Cast

All dimensions are nominal.

Hose Ends

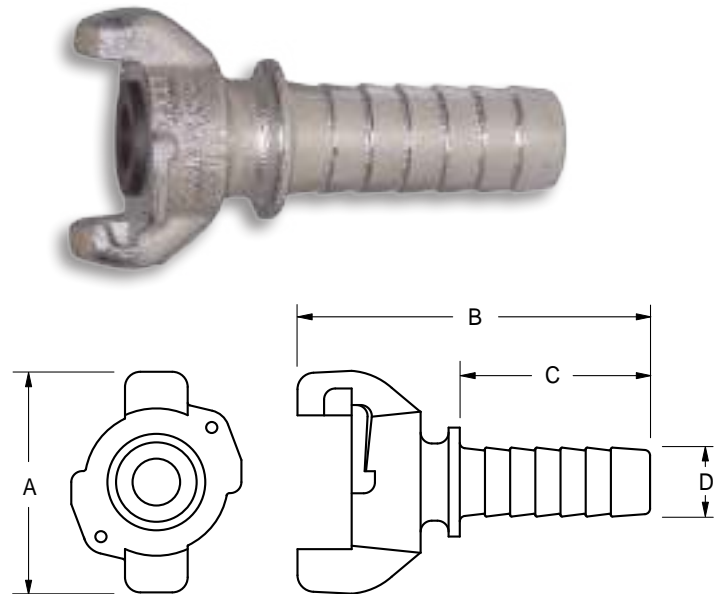
- Shanks are long and deeply corrugated
- Available in iron, brass or 316 stainless steel (5/8" not available in stainless steel)
- Available in sizes 3/8" to 1"

Size	Iron		Brass		316 Stainless Steel
	Part #	pkg qty	Part #	pkg qty	Part #
3/8"	AMH ¹	25	ABH	25	RAMH
1/2"	AM1	50	AB1 ¹	50	RAM1
5/8"	AM5	50	AB5	50	---
3/4"	AM6	50	AB6 ¹	50	RAM6
1"	AM11	50	AB11 ¹	50	RAM11

Dimensions

Size	A	B	C	D
3/8"	2-1/2"	3-1/2"	1-11/16"	7/16"
1/2"	2-1/2"	3-7/16"	1-5/8"	17/32"
5/8"	2-1/2"	4-1/4"	2-7/16"	11/16"
3/4"	2-1/2"	3-15/16"	2-1/8"	25/32"
1"	2-1/2"	4-25/32"	2-13/16"	1-1/16"

¹ Global Investment Cast



All dimensions are nominal.

Air King Clamps

- Air King clamps should be used on all Air King shank fittings. Clamp fingers engage behind the universal head to anchor the coupling to the hose. The ridges on the underside provide additional retention.
- Available in plated iron or carbon steel depending on clamp in sizes 3/8" to 1"

Size	Hose O.D.'s		Torque ¹	Part #	Opt. Qty
	From:	To:			
3/8"	44/64"	56/64"	6	CD ³	100
1/2"	1"	1-12/64"	6	A4	50
3/4"	1-8/64"	1-20/64"	21	A9 ³	50
1"	1-20/64"	1-32/64"	21	A10 ³²	50
1"	1-32/64"	1-52/64"	21	A14	50

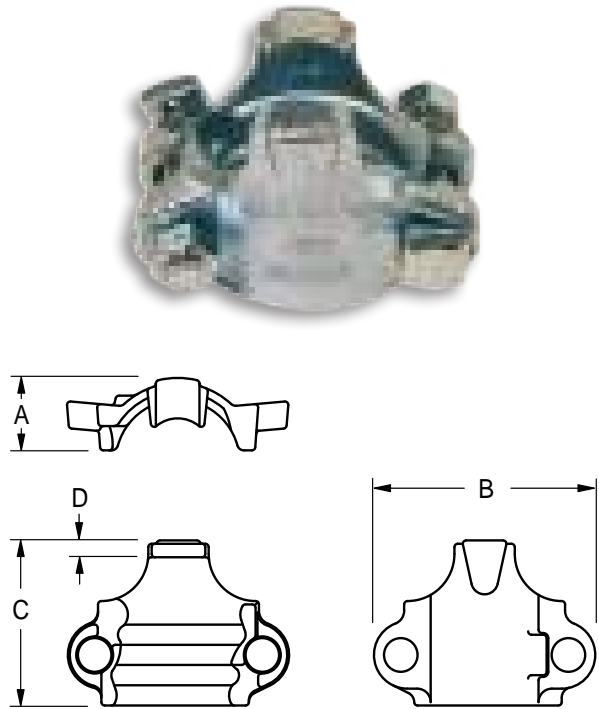
Dimensions

Size	A	B	C	D
3/8"	9/16"	1-11/16"	1-7/16"	3/16"
1/2"	11/16"	2-1/16"	1-17/32"	5/32"
3/4"	7/8"	2-13/16"	1-21/32"	1/8"
1"	7/8"	2-19/32"	1-15/16"	9/32"
1"	1"	3-1/32"	2-1/4"	5/32"

¹ Recommended torque rating in ft. lbs.

² Can be used with **AM6** and **AM11**

³ Global Investment Cast



All dimensions are nominal.

Global Air King

Male NPT Ends



- Plated steel

Size	Part #
1/2"	GAM2
3/4"	GAM7
1"	GAM12

Female NPT Ends



- Plated steel

Size	Part #
1/2"	GAM3
3/4"	GAM8
1"	GAM13

Hose Ends



- Plated steel

Size	Part #
1/2"	GAM1
3/4"	GAM6
1"	GAM11

Blank End



- Plated steel

Size	Part #
--	GAM0

Triple Connection



- Plated steel

Size	Part #
--	GAM10

Ferrules



- Zinc plated carbon steel
- Lightweight
- Can be crimped or swaged
- Offers streamlined appearance with maximum retention
- For crimp recommendations, see page 11

Size	Ferrule I.D.	Part #
1/2"	0.906	CCF0906
	1.120	CCF1120
	1.149	CCF1149
3/4"	1.190	CCF1190
	1.218	CCF1218
	1.246	CCF1246
	1.438	CCF1438
	1.469	CCF1469
1"	1.500	CCF1500
	1.531	CCF1531

Air King Safety Pins, Clips, Lanyards and Washers

**SAFETY
ALERT**

The use of an Air King Safety Clip or wire type retainer is necessary to assure Air King Universal Couplings will not become accidentally disconnected. This guarantees the fittings are properly connected as the pin will not go through holes in mating flanges until the couplings are locked in place. Only one Air King Safety Clip or wire type retainer is required for each Air King Universal Coupling.

Air King Safety Pins

Wire Diameter	Part #
.058	AKSP1
.091	AKSP25

- Heavy duty
- Oversized



Standard Safety Clips

Wire Diameter	Part #
.080	AC1

- Same size for all coupling sizes
- **Sold only in bags of 25**



Stainless Steel Clips

Wire Diameter	Part #
.072	AC7

- Same size for all coupling sizes



Lanyards

Part #
ACL8

- Same size for all coupling sizes.
- Synthetic cord
- **Sold only in bags of 25**



Stainless Safety Lanyard

Part #
LR7

- Breaking strength: 160 lbs.
- 304 stainless
- Overall length: 7" from eye to eye



Washers

Description	Part #
Rubber	AWR4
Neoprene	AWS6

- Rubber temperature range: **-20° F to 160° F**
- Neoprene temperature range: **-20° F to 190° F**
- Neoprene is oil resistant.
- Same size for all coupling sizes
- **Sold only in bags of 50**



Air King 4-Lug Quick Acting Couplings



Hose Ends



Female NPT Ends

- Rated to **150 PSI**
- Use with Boss Clamps (see below)

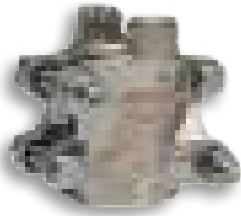
Size	Iron	Brass	opt. qty
	Part #	Part #	
1-1/4"	AM16	AB16	25
1-1/2"	AM21	AB21	25
2"	AM26	AB26	10
1-1/4"	AM18	AB18	25
1-1/2"	AM23	AB23	25
2"	AM28	AB28	20

Washer available, see page 7

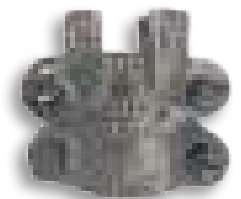
Not to be used for steam service.

NOTE: Safety clips are same size for both 2-lug and 4-lug Universal Couplings. SAFETY
ALERT See page 7.
Use safety clips on all Universal Coupling applications.

Boss Clamps



4-Bolt Type
2 Gripping Fingers



4-Bolt Type
4 Gripping Fingers*

Hose I.D. Size	Hose O.D.'s		Plated Iron		Stainless Steel		Brass	
	From:	To:	Part #	opt.qty	Part #	Torque**	Part #	Torque**
1-1/4"	1-32/64"	1-50/64"	BU18	10	--	40	--	--
1-1/4"	1-44/64"	1-56/64"	187*	10	--	21	--	--
1-1/4"	1-50/64"	2-6/64"	BU19	10	--	40	--	--
1-1/4"	1-56/64"	2-4/64"	206*	20	--	21	--	--
1-1/4"	2-8/64"	2-24/64"	B19	10	RB19	40	BB19	28
1-1/2"	1-52/64"	2"	BU22	10	--	40	--	--
1-1/2"	2"	2-14/64"	B22	10	--	40	--	--
1-1/2"	2"	2-8/64"	212*	10	--	21	--	--
1-1/2"	2-4/64"	2-16/64"	225*	10	--	40	--	--
1-1/2"	2-12/64"	2-24/64"	BU24	10	RBU24	40	BBU24	28
1-1/2"	2-24/64"	2-36/64"	B24	10	RB24	40	--	--
1-1/2"	2-36/64"	2-48/64"	B25	10	--	40	--	--
2"	2-16/64"	2-32/64"	250*¹	10	--	40	--	--
2"	2-22/64"	2-34/64"	BU28	10	--	60	--	--
2"	2-32/64"	2-48/64"	275*¹	10	--	40	--	--
2"	2-32/64"	2-50/64"	BU29	10	RBU29	60	BBU29	40
2"	2-48/64"	3-4/64"	B29	10	RB29	60	--	--
2"	2-48/64"	3-4/64"	306*¹	10	--	60	--	--
2"	3-6/64"	3-28/64"	B30	5	--	60	--	--

* 4 gripping fingers.

** Torque applies to plated iron *and* stainless steel clamps.

¹ Not to be used with: GF81, GB26, WF81, B26, R6F81, RGB26, BFG81, BGB26, RWF81, RB26

- The bolts used in the Boss interlocking clamps are not standard bolts. They vary from standard bolts in their length, diameter, overall thread length and material hardness. These bolts can be retorqued, but it is **not** recommended that the bolts *or* clamps be reused, as they are designed for a single bend only. Dixon recommends using only factory supplied replacement bolts.
- Torque values for clamps are based on dry bolts. The use of lubricant on bolts will adversely effect clamp performance.
- Do not lubricate nuts and bolts.
- Recommended torque rating in ft. lbs.

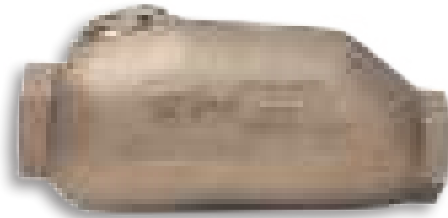
SAFETY
ALERT

SAFETY
ALERT

In-Line Lubricators

Designed to protect portable or stationary air tools by efficiently oiling the tool mechanisms. Each time an air tool is operated, a fine mist of oil is injected into it along with the air from the compressor. Installation is recommended within 25 feet of the tool to be lubricated. Refer to the arrow for proper air flow direction. Transparent sight disc allows visual inspection of oil level. Oil flow is regulated by screwdriver screw adjustment. Not recommended for constant flow applications. Minimum flow rate is 30 SCFM.

NPT Size	Oil Capacity	Max. Working Pressure @ 70° F	Air Flow at 70 PSI	Part #
1/2"	1.4 fluid ozs.	500 PSI	30 SCFM	PL300
3/4"	3.7 fluid ozs.	200 PSI	70 SCFM	PL400
3/4"	11.0 fluid ozs.	300 PSI	70 SCFM	PL400L
1"	16.0 fluid ozs.	250 PSI	100 SCFM	PL500



Type of oil to use

Use any petroleum-base, non-detergent light weight oil (SAE 10/150SSU) which will readily break up into a mist, i.e., Mobil DTE light or comparable oil. **Do not use any synthetic oil or oils containing additives or solvents.**

Compressor "Y"

Converts a single supply source to a dual outlet.

Female NPT Inlet (1)	Male NPT Outlet (2)	Part #
1"	3/4"	Y10075



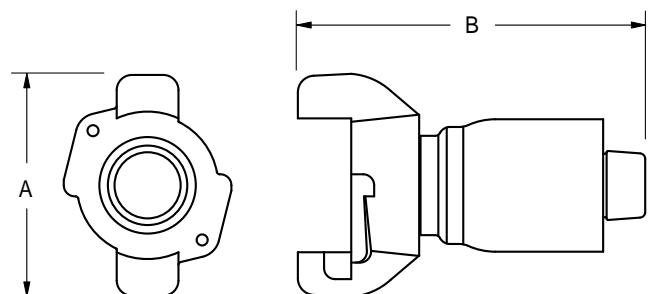
Air King with Ferrules

- Rated to **150 PSI** working pressure
- Available in iron and stainless steel
- *Carbon steel ferrules*
- Exclusive interlocking ferrule can be crimped or swaged depending on your coupling installation equipment (for crimp or swage diameter recommendations see page 10).

Size	OD Range		Part #	
	From:	To:	Malleable	Stainless
1/2"	54/64"	1-2/64"	AM1WF	-----
3/4"	1-4/64"	1-22/64"	AM6WF	RAM6WF
1"	1-18/64"	1-34/64"	AM11WF-1	-----
1"	1-30/64"	1-46/64"	AM11WF	-----

Dimensions

Size	A	B
1/2"	2-1/2"	3-7/16"
3/4"	2-1/2"	3-15/16"
1"	2-1/2"	4-25/32"



All dimensions are nominal.

Air King Recommendation Guide

The chart at the right is only a guide. It will not apply to every coupling situation. In some instances alternative dies and crimping dimensions must be employed to ensure safety. Experience has shown that variances in the construction of similar hoses and couplings may cause some assemblies to react differently when crimped. It is not uncommon to find hose with an outer diameter that fluctuates from one end to the other or from production lot to production lot. These inconsistencies coupled with the inherent differences between textile or wire braid, hard or soft wall, the presence or absence of an internal spiral wire and the differences in hose coverings make it difficult to establish hard and fast rules. Therefore, its imperative that hose dimensions are accurately measured, assemblies are tested, and documentation is maintained.

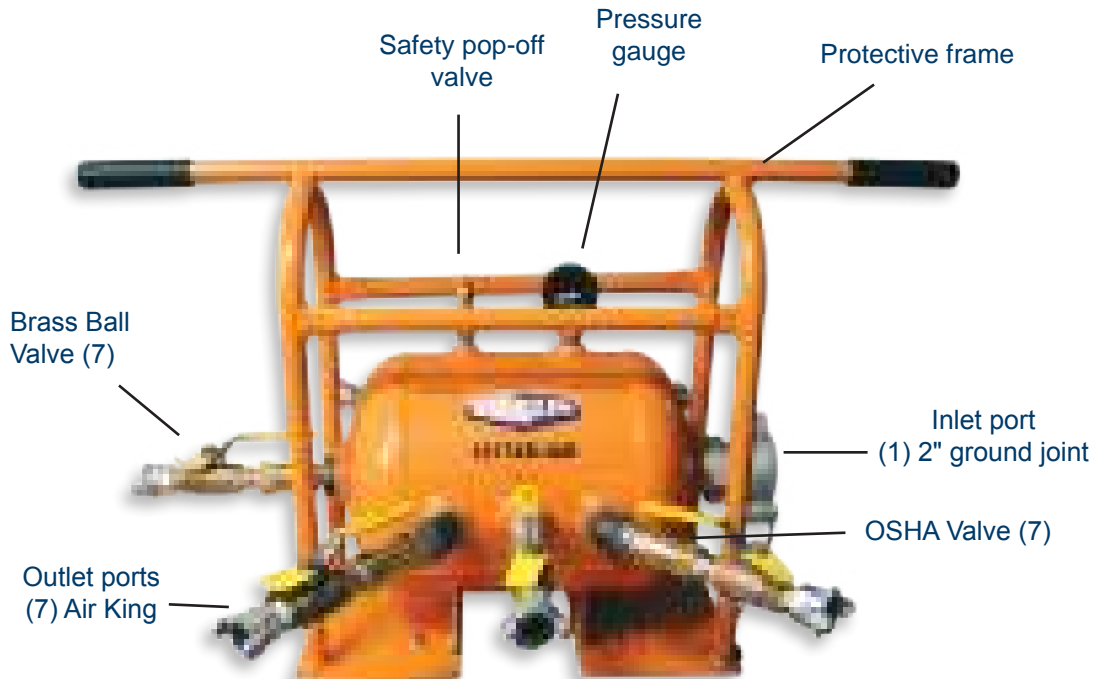
Hose Size (ID)	Part #	Fractional Hose OD	Swage Die Sizes	Die Part #	Crimp Diameter	% Reduction
1/2"	AM1WF	54/64	1-3/16 x 29/32	1&3/16D4	0.906	18.3%
		55/64	1-3/16 x 15/16	1&3/16D5	0.937	13.2%
		56/64				16.9%
		57/64	1-3/16 x 31/32	1&3/16D3	0.968	12.1%
		58/64				15.5%
		59/64	1-3/16 x 1	1&3/16D	1.000	11.1%
		60/64				14.4%
		61/64				17.2%
		62/64	1-3/16 x 1-1/32	1&3/16D2	1.031	13.4%
		63/64				16.1%
3/4"	AM6WF and RAM6WF	1	1-3/16 x 1-1/16	1&3/16D1	1.062	12.7%
		1-1/64				15.3%
		1-2/64	1-3/16 x 1-3/32	1&3/16D6	1.093	12.0%
		1-4/64	1-1/2 x 1-5/32	1&1/2D6	1.156	13.4%
		1-5/64				17.3%
		1-6/64	1-1/2 x 1-3/16	1&1/2D7	1.187	11.9%
		1-7/64				15.8%
		1-8/64	1-1/2 x 1-7/32	1&1/2D5	1.218	11.2%
		1-9/64				14.6%
		1-10/64				17.5%
1"	AM11WF-1	1-11/64	1-1/2 x 1-1/4	1&1/2D4	1.250	13.0%
		1-12/64				16.2%
		1-13/64	1-1/2 x 1-9/32	1&1/2D3	1.281	12.3%
		1-14/64				15.1%
		1-15/64	1-1/2 x 1-5/16	1&1/2D2	1.312	11.5%
		1-16/64				14.4%
		1-17/64				16.9%
		1-18/64	1-1/2 x 1-11/32	1&1/2D	1.343	13.5%
		1-19/64				15.9%
		1-20/64	1-1/2 x 1-3/8	1&1/2D1	1.375	12.6%
1"	AM11WF and AM11WF-1	1-21/64				15.0%
		1-22/64	1-1/2 x 1-13/32	1&1/2D8	1.406	12.1%
		1-18/64	1-11/16 x 1-3/8	1&11/16D4	1.375	16.7%
		1-19/64				20.5%
		1-20/64	1-11/16 x 1-13/32	1&11/16D5	1.406	15.0%
		1-21/64				18.6%
		1-22/64	1-11/16 x 1-7/16	1&11/16D8	1.437	13.7%
		1-23/64				17.5%
		1-24/64	1-11/16 x 1-15/32	1&11/16D6	1.468	12.8%
		1-25/64				16.1%
1"	AM11WF	1-26/64	1-11/16 x 1-1/2	1&11/16D	1.500	11.5%
		1-27/64				14.7%
		1-28/64				17.6%
		1-29/64	1-11/16 x 1-17/32	1&11/16D2	1.531	13.9%
		1-30/64	1-7/8 x 1-17/32	1&7/8D8	1.531	16.8%
		1-31/64				12.8%
		1-32/64	1-7/8 x 1-9/16	1&7/8D5	1.562	15.4%
		1-33/64	1-7/8 x 1-19/32	1&7/8D6	1.593	12.0%
		1-34/64				14.7%
		1-35/64	1-7/8 x 1-5/8	1&7/8D7	1.625	11.1%
1"	AM11WF	1-36/64				13.7%
		1-37/64				15.9%
		1-38/64	1-7/8 x 1-21/32	1&7/8D1	1.656	12.9%
		1-39/64				15.1%
		1-40/64	1-7/8 x 1-11/16	1&7/8D	1.687	12.4%
		1-41/64				14.5%
		1-42/64	1-7/8 x 1-23/32	1&7/8D2	1.718	11.8%
		1-43/64				14.0%
1"	AM11WF	1-44/64	1-7/8 x 1-3/4	1&7/8D4	1.750	11.3%
		1-45/64				13.3%
		1-46/64				15.1%

Global Air King Crimp Recommendation Guide

Hose Size (ID)	Stem Part #	Ferrule Part #	Fractional Hose OD	Crimp Diameter	% Reduction
1/2"	GAM1	CCF0906	54/64	0.840	15
		CCF0906	55/64	0.853	15
		CCF0906	56/64	0.867	15
3/4"	GAM6	CCF1120	1-5/64	1.082	20
		CCF1120	1-6/64	1.094	20
		CCF1149	1-7/64	1.107	20
		CCF1149	1-8/64	1.119	20
		CCF1190	1-9/64	1.122	20
		CCF1190	1-10/64	1.134	20
		CCF1218	1-11/64	1.147	20
		CCF1218	1-12/64	1.159	20
1"	GAM11	CCF1246	1-13/64	1.182	20
		CCF1246	1-14/64	1.194	20
		CCF1438	1-25/64	1.388	20
		CCF1438	1-26/64	1.400	20
		CCF1469	1-27/64	1.413	20
		CCF1469	1-28/64	1.425	20
		CCF1500	1-29/64	1.438	20
		CCF1500	1-30/64	1.450	20
		CCF1531	1-31/64	1.463	20
		CCF1531	1-32/64	1.475	20

ASME Air Receiver Manifold

- Safely distributes compressed air to machines and tools.



* Drain cock not shown

Service:

- 7 gallon capacity provides air reserve needed for operation of tools
- **200 PSI** maximum working pressure for tank (Working pressure of the system is limited to maximum working pressure of the components, i.e. 150 PSI for Air King)

Features:

- all tank outlets have female NPT threads
- portable - easy carry handles standard
- solid base with mounting holes standard
- approximate tank dimensions are 12" x 17"; 40" x 24" with frame
- painted safety orange

Components:

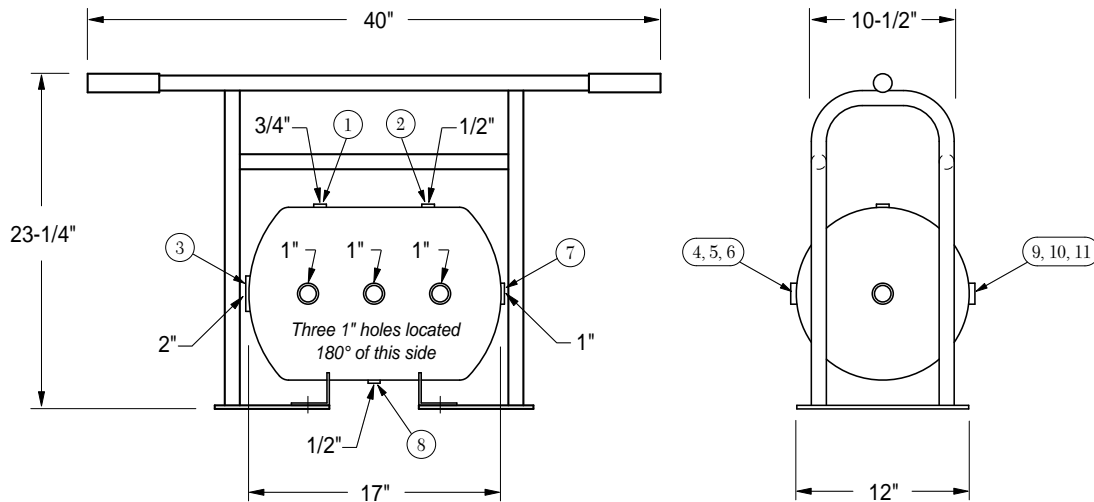
- spring-loaded safety shut-off valves (Cut-off Flow Rate 160-180 CFM at 90 PSI)
- safety pop-off valve (200 PSI) to protect against over-pressurizing of tank
- 0-300 PSI gauge
- locking handle ball valves
- drain valve provides for removal of accumulated oil and water

Codes and Standards:

- built to ASME Code, National Board registered
- conforms to OSHA Standards 1910.169 and 1926.306

ASME Air Receiver Manifold

Bill of Materials



Dixon 1217AR-4AK Air Receiver Manifold Assembly with Air King Outlet Ports includes the following:

Part # / locations	Description
1217AR-4	ASME compressed air receiver
1217 Frame	1 protective frame
location 1	1 HB2F6M 3/4" male x 1/4" female hex bushing 1 GL345 0-300 PSI Gauge
location 2	1 HB2F4M 1/2" male x 1/4" female Hex Bushing 1 SV200 safety pop-off valve
location 3	1 GM28 2" male spud 1 B27SC wing nut cap
locations 4, 5, 6, 9, 10, 11	6 HB1075G 1" male x 3/4" female bushings 6 BCN75 3/4" brass hex nipples 6 BBLV75 ball valves 6 SCVS6 safety shut-off valves 6 AM7 Air King universal couplings 4 SE45100 45° street elbow (1 each in locations 4, 6, 9 and 11 only)
location 7	1 HB2075 2" male x 3/4" female bushing 1 BCN75 3/4" brass hex nipple 1 BBLV75 ball valve 1 SCVS6 safety shut-off valve 1 AM7 Air King universal coupling
location 8	1 HB2F4M 1/2" male x 1/4" female hex bushing 1 D04 1/4" drain cock
1217AR-4AK	7 Gallon ASME compressed air receiver manifold <i>complete assembly</i> with Air King
1217AR-4PHL	7 Gallon ASME compressed air receiver manifold <i>complete assembly</i> with Dual Lock
1217AR-4FR	7 Gallon ASME compressed air receiver tank and frame ONLY

King Safety Cables

When hose, couplings or clamps fail, or there is an accidental separation of the assembly, King Safety Cables minimize damage to equipment and injuries to operators. King safety cables reach across the hose fittings to provide standby safety for the hose. Spring-loaded loops in the cable ends open easily to pass over the couplings for a firm grip on the hose. Thoroughly tested with years of service. A positive safeguard for air hose connections - helps you meet today's safety standards. *The King safety cable must be installed in the extended position (no slack).*

**SAFETY
ALERT**

Features:

- Hose-to-hose or hose-to-rigid outlet
- King Cable is the low cost answer to eliminate injuries caused by broken air hose connections
- Highly resistant to rust and corrosion
- No tools needed - Easy to install and remove



Hose End Tool End

Style WSR, for hose-to-tool service

Cable	Part #	Hose I.D.	Length	Maximum W P PSI
1/8"	WSR1	1/2" to 1-1/4"	20-1/4"	200
3/16"	WSR3	1/2" to 2"	28"	200
1/4"	WSR2	1-1/2" to 3"	38"	200
3/8"	WSR4	4"	44"	200



Hose End Hose End

Style W, for hose-to-hose service

Cable	Part #	Hose I.D.	Length	Maximum W P PSI
1/8"	WB1	1/2" to 1-1/4"	20-1/4"	200
3/16"	WB3	1/2" to 2"	28"	200
1/4"	WA2	1-1/2" to 3"	38-1/4"	200
3/8"	WA4	4"	44"	200

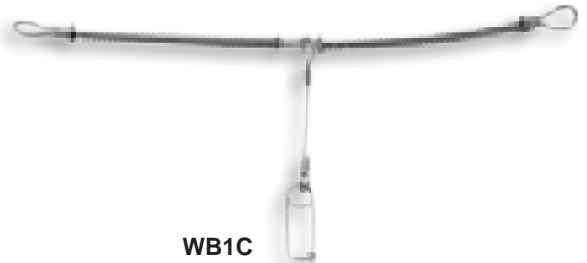
Note: Cables are shipped with safety restraint labels attached. Labels are not pictured.

King Safety Cable Options



WSR1E

WSR1E with stainless steel marine eye



WB1C

WB1 with safety clip and lanyard

Cable	Part #	Description	Maximum W P PSI
1/8"	WSR1C	WSR1 with safety clip and lanyard used to lock Air King couplings	200
1/8"	WB1C	WB1 with safety clip and lanyard used to lock Air King couplings	200
1/8"	WSR1E	WSR1 with stainless steel safety marine eye used to connect safety cable to a bolt on tool	200
1/4"	WA2B	WA2 with bronze/copper ferrule for special environmental conditions	200
1/8"	WB1SS	WB1 made with 304 stainless steel cable and springs with bronze/copper ferrules for special environmental conditions	200

OSHA Regulations

Standards - 29 CFR, 1915.131 (partial):

(e) Before use, pneumatic tools shall be secured to the extension hose or whip by some positive means to prevent the tool from becoming accidentally disconnected from the whip.

Standards - 29 CFR, 1926.302 (partial):

(b)(1) Pneumatic power tools shall be secured to the hose or whip by some positive means to prevent the tool from becoming accidentally disconnected.

Standards - 29 CFR, 1926.603 (partial):

(a)(9) Steam hose leading to a steam hammer or jet pipe shall be securely attached to the hammer with an adequate length of at least 1/4-inch diameter chain or cable to prevent whipping in the event the joint at the hammer is broken. Air hammer hoses shall be provided with the same protection as required for steam lines.

(a)(10) Safety chains, or equivalent means, shall be provided for each hose connection to prevent the line from thrashing around in case the coupling becomes disconnected.



Scan Me with your smart phone to browse the Air section
of the Dixon Valve website

Download a free QR-Code 2D barcode reader:
mobile-barcodes.com/qr-code-software/

Dixon is recognized as the premier manufacturer and supplier of hose fittings and accessories spanning a wide range of industrial uses. Dixon's range includes products for food, dairy processing, beverage and brewery, mobile tankers, mining, construction, chemical processing, petroleum, oilfields, refining and manufacturing.

dixonvalve.com • *Customer Service:* **877.963.4966**

Dixon Valve

800 High Street, Chestertown, MD 21620

Fax: 800.283.4966



You Tube



Dixon
Customer Service